

September 2006



# Growing with Gray's

A Seasonal Gardening Newsletter for the Willamette Valley

## A Note Of Gratitude

It's been just over eight years since my wife Janice and I bought Gray's from another local family. We are the third native Eugene-area family to own the business.

We were reflecting the other night (as we regularly do) how fortunate we are to have you as a customer. We also recognize that we are very fortunate to have a dedicated, knowledgeable, quality staff as well as a stable of hard working, talented local growers and vendors that make our stores work so well.

So... we would like you to know that we don't take any of you for granted and we are committed to continuing our best efforts to improve our products, service and values for you, while preserving the great local heritage that the Gray's family started 66 years ago.

Again, we truly appreciate your business. Thank you.

Scott Bocci  
President

## Duck Colors Are In For Fall



If you are like most people in Eugene-Springfield, green and yellow is very popular this time of year. We have a great selection of green and yellow planters, mums and color bowls for your fall get-togethers. So, whether it's a tailgater, patio party or just any day, stop by and pick up a ready-to-go decorative planter in duck colors!

## Reminder....

Redeem your Color Dollars for savings of up to 50% throughout the store!  
Come early for best selection!



October 1 - 31

## Spectacular Color Is What Makes Fall So Special



A big part of the quality of life in the southern Willamette Valley is the beautiful fall color, and the best part of that is the brilliant reds produced by the maples and sweetgums.

If you would like to color it up for yourself and your neighbors, Stuart has selected the most popular varieties at great prices for you. Here are some great choices:

Red sunset maple- vigorous growing tree with a strong and symmetrical branching habit. Lustrous, glossy green summer foliage changes to brilliant red and orange-red in the fall.

45' tall and 35' wide

Armstrong red maple- fast growing tall, narrow tree with ascending branches. Widely used for street tree planting.

Orange-red to yellow fall color. 45' tall and 15' wide

October glory maple- round headed selection that is the last to color in fall. Red and orange-red fall color. 40' tall and 35' wide.

Sweetgums- tall upright growth habit fall color ranges from shades of red, yellow, and oranges. 50' tall and 35' wide

Bloodgood london plane- naturally shedding bark creates a dappled brown and cream pattern. Large, broadly and pyramidal form. Yellow fall color. 50' tall and 40' wide

Linden-strong grower with a central leader. Symmetrical and pyramidal in form. Yellow fall color. 40' tall and 30' wide

Columnar tulip tree- tall, narrow and tightly fastigiate, it has one of the best forms of columnar trees. Fast growing selection retains its slender form in maturity. 50' tall and 15' wide.

Red Maples- Red Sunset, Armstrong and October glory Beautiful red fall color on these very popular tree forms \$89.99 price reg.

\$59.99 sale (most are 10' tall in #7 size pot)

## Fall Magic Is Back! With Rave Reviews From Our Customers

It's time to redo your containers and beds with fresh, new, colorful plants. In the past, by late July all that most garden centers had to offer were a few spindly spring leftovers or root-bound perennials. Then came fall magic - the result of decades of breeding efforts and field trials. Fall magic plants perform through the hottest days of summer until the snow flies. Our large-flowered varieties bloom nonstop, and the rich, vivid colors of the foliage intensify as the weather cools.

Here are a few of our favorites:

Euphorbias with superb container structure are prized for their unique flower heads, textured foliage, and outstanding hardiness.

"Efanthia" euphorbia has small bluish green leaves that develop purple edges and red undersides.

"Helena's Blush" is a variegated form of Efanthia with chartreuse foliage and white flowers. In cool weather, cream variegation becomes bright fuchsia colored.

"Kalipso" is a compact, dwarf version of Efanthia with bushy golden yellow flowers.

Osteospermum are also great for fall color. Varieties in this series bloom nonstop from spring through fall.

"Lemon Symphony" and "Orange Symphony" are perfect for fall décor.

Fall magic has over 35 Proven Winner varieties. Let Fall Magic work for you.



Backyard birding is one of the biggest recreational activities American's participate in and there can be a lifetime of pleasure in the contemplation of birds and once and awhile a good myth surfaces that gives us cause to grin, or grimace at the unlikely possibility!

- Myth - take down bird feeders in the fall because they keep birds from migrating. So not true, in fact fall is a wonderful time to put up a feeder! Birds that remain in the area stay because there is a glitch in their genetic makeup, not because of ample food to be had. All long distance migratory birds move in response to genetic and environmental forces. Having backyard feeders may help any misguided bird to survive the winter!

- Myth - parent birds will abandon a nestling if human hands have touched it. An amazingly popular but untrue myth. Millions of baby birds are monitored, weighed and banded with great success. It may be that intrusive, offensive disruptive behaviors can be disruptive to birds nesting success, not the way we smell.

- Truth - Black Oil Sunflower seed is the most widely used birdseed, popular with the greatest number of bird species. Jays, Chickadees, Titmice and Nuthatches enjoy the larger thick shelled grey-striped sunflower seeds.

- Truth - if your feeder is overrun with blackbirds, pigeons or house sparrows, stop offering mixed seed on the ground or platform feeders. Feed only black oil sunflower seed in tube or hopper feeders until the problem birds disperse.

- Truth - Gray's Wild Bird Center has a wonderful mix of feeders and feed to add pleasure to your bird watching experience.

Now, take 20% off any Woodinville brand bagged bird food thru Sept 25.

## Now Is The Time To Feed Your Lawn For Winter

Fall feeding is critical to good root development through the dormant season. The benefits you will see are:

- ✓ A greener, lusher lawn now
- ✓ A thicker lawn in spring
- ✓ Greater weed, disease and insect resistance

Apply the following at the same time and water in:

- 1 Gray's Premium Lawn Winterizer at a rate of 20# per 3,000 sq ft.
- 2 Natural Guard Soil Activator at a rate of 20 lbs. per 2,000 sq ft.
- 3 Calpril Lawn & Garden Lime at a rate of 25 lbs. per 2,500 sq ft. 4
- 4 Turf Ranger at a rate of 10 lbs. per 5,000 sq ft for European Crane Fly control. (\*If necessary)

All of the above products are unconditionally guaranteed for your satisfaction. Using our formula, you will have the most beautiful, green lawn in your neighborhood, unless of course, your neighbors are using it too! We guaranty it!

## Did You Know That You Are A Gray's Premier Garden Club Member?

Customer loyalty programs have become so common these days that few people can even distinguish one from another. So we would like to point out a few of the benefits of being a Gray's Premier Garden Club (GPG) member.

- It's Free
- It's Easy
- There are no catches or gimmicks
- You don't have to do anything (like carry a card or fill out forms)
- You get frequent flower miles automatically

But what is really surprising is this: Do you know what is the biggest benefit according to our customers? We store your receipts for you, so you don't have to worry about not being able to find it if you need to return something or have a questions about something you purchased. Believe it or not (it's true) this simple benefit has saved our customers countless hours of frustration and has greatly improved our service.

Upgrade now to our e-GPG club (also easy, free and quick) and enjoy these additional benefits. Just go to [www.graysgardens.com](http://www.graysgardens.com) and click on "Sign up...."

1. \$10 off on your next visit
2. Growing With Gray's by e-mail (save a tree)
3. Exclusive discount offers (really good offers!)
4. Access to Gray's library on-line
5. \$50 winner notified by e-mail

*and*

No popups No spam No data sharing No sensitive info

## Garden reminders from your OSU Extension Agent and Gray's staff

### SEPTEMBER/OCTOBER

- Apply parasitic nematodes to soil beneath rhodies, azaleas, pieris, camellia and viburnum affected by root weevils. Do this now while soil temps are still warm.
- Plant garden cover crops as garden is harvested. Spread manure or compost over unplanted garden areas.
- Divide perennials and peonies now, giving them time to root out for spring.
- Bait for slugs with traps or iron phosphate products that are safe for use around pets.
- Prepare compost pile for recycling vegetation from garden and deciduous trees. Do not compost diseased or insect-infested plant material.
- Copper spray for peach, cherry and dogwood trees as soon as leaves fall.
- Monitor arborvitae for Berckmann's blight. Spray if necessary with copper.
- Treat lawns for crane fly as necessary late Sept-Oct, using new Turf Ranger, the most effective product on the market... and it's extremely safe.
- Spray stone fruit trees to prevent various fungal and bacterial diseases. Use copper fungicides - visit the store for help and advice.
- Place mulch over roots of roses, azaleas, rhododendrons, berries for winter protection.
- Check/treat houseplants for disease and insects before bringing indoors.
- Pot and store tulips and daffodils to force into early bloom in December and January.
- Cover asparagus and rhubarb beds with a mulch of manure or compost.
- Remove windfall apples that might be harboring apple maggot or codling moth larvae.
- Clean up annual flower beds; mulch with manure or compost.
- Dig and divide rhubarb. (Should be done about every 4 years.)
- Treat for moss on roofs during dry periods, visit the store - we can save you money.
- Dig and store geraniums, tuberous begonias, dahlias, gladiolas.
- Control lawn weeds while they are small using Fertilome Weed Free Zone or All-Seasons lawn weed control.
- Plant ground covers, trees and shrubs.
- Fertilize lawn for last time this year using Gray's Lawn Winterizer 20-12-8 slow release.

For complete instructions and more tips, go to [www.graysgardens.com](http://www.graysgardens.com)

## Events At Gray's

September 23

### OUTSMARTING MOLES & GOPHERS

Tired Of Those Pesky Moles & Gophers Gobbling Up Your Garden? Doug Freeman Will Give You Great Advice On Ridding Your Garden Of These Pests

Time: 10AM Springfield Cost: \$ FREE!

September 23 Eugene 9-5

September 24 Springfield 10-4

### LANDSCAPE DESIGN FOR YOUR HOME

Bring a photo of the area you want to landscape, with approximate dimensions and spend 20 minutes with Stuart Leaton, Gray's expert on landscape. Stuart will sketch out a planting plan just for you. Please call to schedule your time.

Cost: \$ FREE!

September 30

### PRUNING THE RIGHT WAY

Do your roses, trees, and shrubs look like they've had a bad haircut? Stuart leaton from gray's will show you what, how, and when to prune your garden favorites so they remain healthy.

Time: 10 am Eugene and 2 pm Springfield Cost: \$FREE!

October 7

### FREE SOIL TESTING

Frank Wann from Pacific Calcium will give a brief overview of how soil can affect the outcome of your plantings. You'll learn how to get healthy soil and keep it that way. Bring a cup of soil from your yard in a baggie, and have it tested for free!

Time: 10 AM Eugene-1 Pm Springfield Cost: \$ FREE!

October 7

### NEW CONTAINER ARRANGEMENTS FOR FALL & WINTER

View our display of Fall Container Arrangements at both stores and our staff will assist you in putting together one of your own!

October 21

### PREPARING YOUR ROSES FOR WINTER

You'll learn how to prepare your roses for winter in order to have the healthiest, most beautiful and disease resistant roses come spring. You'll get pruning tips and a lot of other great information presented by Stuart Leaton, Gray's rosebuyer.

Time: 10:00 Eugene 2:00 Springfield Cost: \$ FREE!

November 11

### LOCAL AUTHOR S BOOK SIGNING

please join us at a book signing by local authors including, Kris Wetherbee "Attracting Birds, Butterflies, & Other Winged Wonders To Your Backyard", Rachel Foster "All About Gardens", Ellen Schlesinger "Guide To Nearby Nurseries 4th Ed", Harry Nehls "Birds Of The Willamette Valley Region", and others! These books make a wonderful gift-to yourself or others!

Time: 10am-Noon/Eugene Store Cost: \$FREE!

PRESORTED  
STANDARD  
US POSTAGE  
PAID  
IP

737 W. 6th St.  
Eugene, OR 97402

Mon-Sat 9-7 • Sun 10-5  
www.graysgardens.com

## See Inside for Special Savings for GPG Members Only!

### Spring Flowering Bulbs Gaining Popularity

"As more young people realize that spring flowering bulbs are a great investment, they are beginning to see a resurgence in popularity", according to Mark Hopkins of the Van Bourgondien Bulb Company. "They realize that by taking a few minutes to plant in the fall, they have this spectacular show in the spring when it's really too cold and wet to want to get out and garden".

So true. We now offer over 115 varieties just in Tulip and Daffodil bulbs, plus 25 pre-packaged color arrangements that are so easy to plant. Come in the store for a free handout, or visit our website to learn how you can plant a 200 square foot area in 15 minutes this fall, and enjoy an incredible show as a welcome to spring!

Perfect Partners spring color combinations such as Purple Passion Blend, Halo Daffodil Mix, Bicolor Duet and 22 others are **only \$9.99**



✓ Better Information  
✓ Greater Savings

And

**\$10 OFF\*** on your next visit

Just for upgrading to e-GPG

It's still free, still no gimmicks!

In-store or on line at [www.graysgardens.com](http://www.graysgardens.com)

\*see offer for details

### Gray's City Basket Special Offer



Gray's City Baskets are the giant, 18" mixed baskets like the ones you see at our store entrances and all over downtown. Now you can special order your baskets for next spring and save \$5. Plus... you can choose your color scheme! Gray's City Baskets will be ready in mid-late April. What a deal! .....and we're offering this to our Premier Garden customers only!

Just call either store and place your order. No deposit required for GPG members!

Eugene 345-1569 Springfield 747-2301



# SEPTEMBER CLEARANCE SALE



for Premier Garden Club members only

This sale is exclusively for Gray's GPG members and is not advertised in the media!



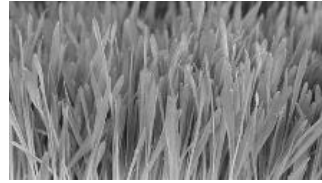
## 1# Sluggo

### sale \$7.99

regular \$9.99

Expires September 25

## \$5.00 off



Gray's lawn care program including:

Gray's fall lawn food, Calpril (fast acting lime), Soil Activator

Expires September 25



## 2 for \$10

### EB Stone 1.5 cu planting compost

Expires September 25



## 2 For \$10

### Grays Premium Potting Mix 2 cu

Expires September 25



## 30% - 50% off outdoor rustic, glazed or terra cotta pottery,

limited to stock on hand

Expires September 25



## MOSS-B-WARE 3 lb - the original moss killer, safe for roofs, patios and walkways

### Only \$6.99

Expires September 25



Bird lover's special! 20#

## Waste Not

premium wild bird food, save \$7.00 reg \$28.99

### now \$21.99

Expires September 25

## 25% Off

- All Maples
- Sweetgum
- Bloodgood London Plane
- Linden
- All Dogwood
- All Conifer Trees
- Butterfly Bush
- Barberry
- Bamboo

Expires September 25

## 30% Off

- Oleander
- Stick Of Fire
- Tree Gardenia
- Banana Plants
- ... and more

Expires September 25

## 50% Off

- All Fruit Trees
- Specimen Cactus
- Bird Of Paradise
- Tree Hibiscus

Expires September 25

### Great Sale Prices Through Out The Stores!